



FITTING INSTRUCTIONS FOR DG0021 DOWNPIPE GRILLE
KAWASAKI Z1000SX '11-



THIS KIT CONTAINS THE ITEMS PICTURED AND LABELLED BELOW.
DO NOT PROCEED UNTIL YOU ARE SURE ALL PARTS ARE PRESENT.

Please note that the way the kit is packed does not necessarily represent the way of mounting to the bike

Please note that in cases where kits are packed with rubber washers holding the components onto the bolt – *the rubber washers should be thrown away!*

THE PARTS SHOWN MAY BE REPRESENTATIVE ONLY (FOR CLARITY OF INSTRUCTIONS ONLY)

GENERAL TORQUE SETTINGS

M4 BOLT = 8Nm
 M5 BOLT = 12Nm
 M6 BOLT = 15Nm
 M8 BOLT = 20Nm
 M10 BOLT = 40Nm

TOOLS REQUIRED

- Socket set to include 10mm socket, wrench & extension.
 - 4, & 5mm Allen keys.
 - Flat headed screwdriver.
 - Cable cutters.

In This Kit There Should Be

1x Downpipe Grille (DG0021).
 4x Cable Ties.



Picture 1



Picture 2



Picture 3



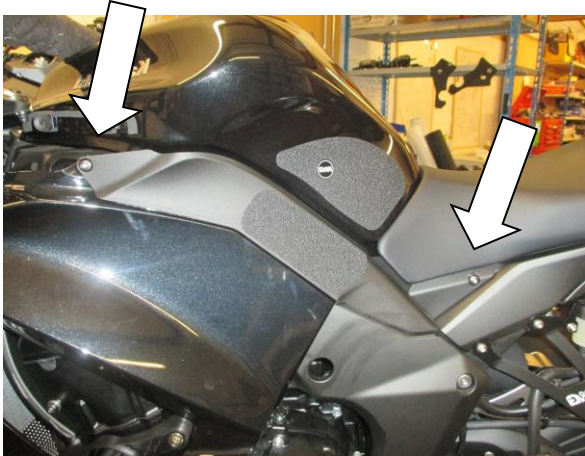
Picture 4



Picture 5



Picture 6



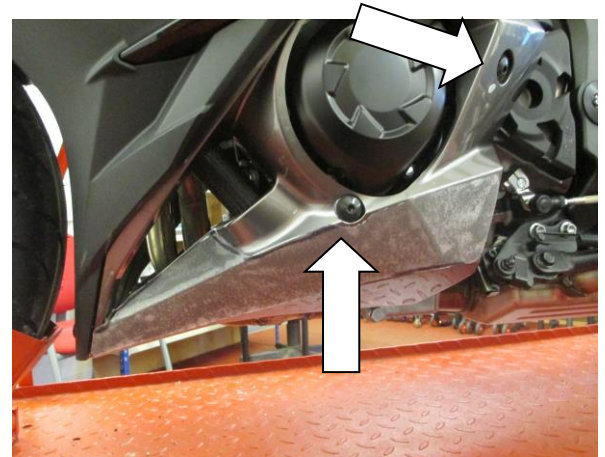
Picture 7



Picture 8



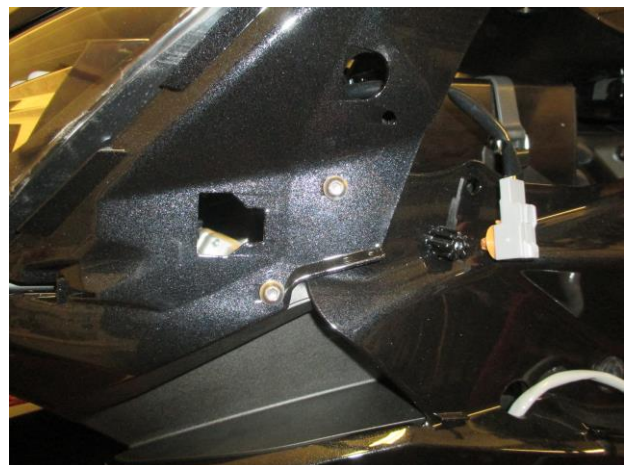
Picture 9



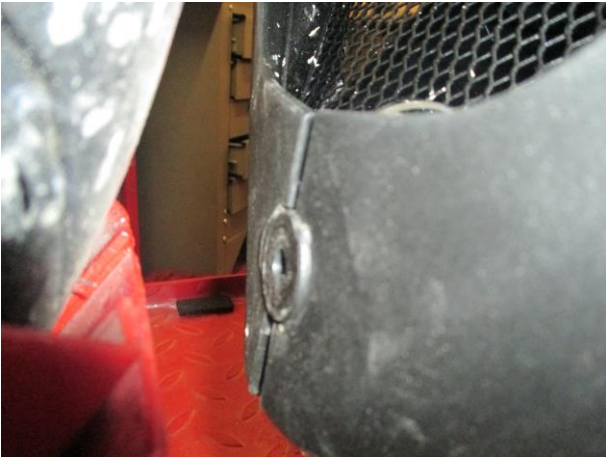
Picture 10



Picture 11



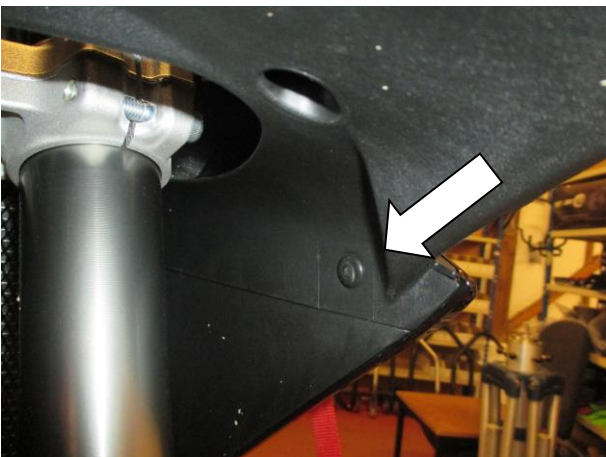
Picture 12



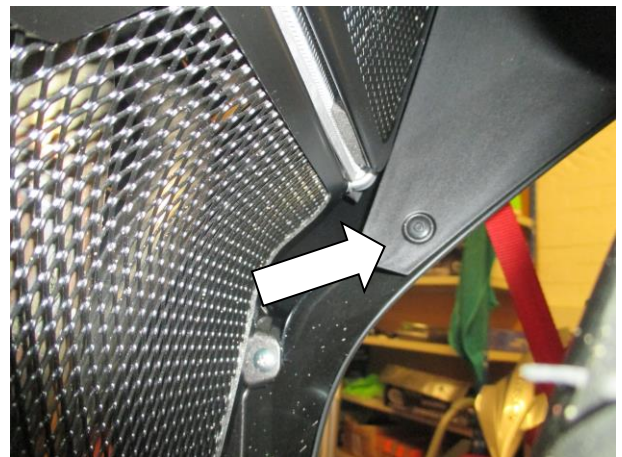
Picture 13



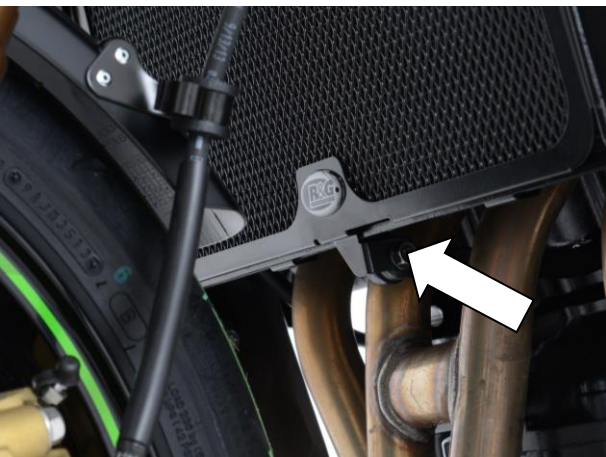
Picture 14



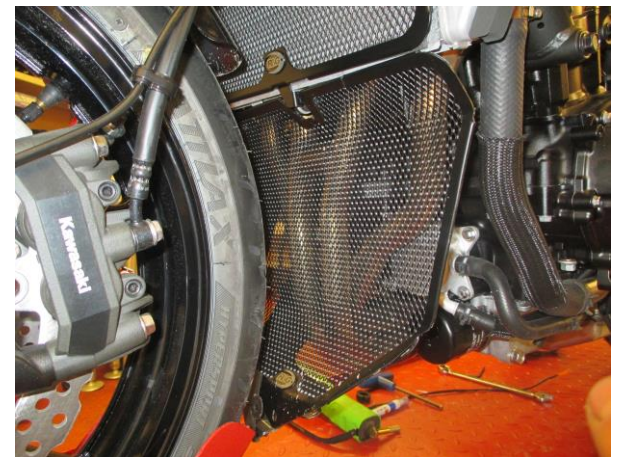
Picture 15



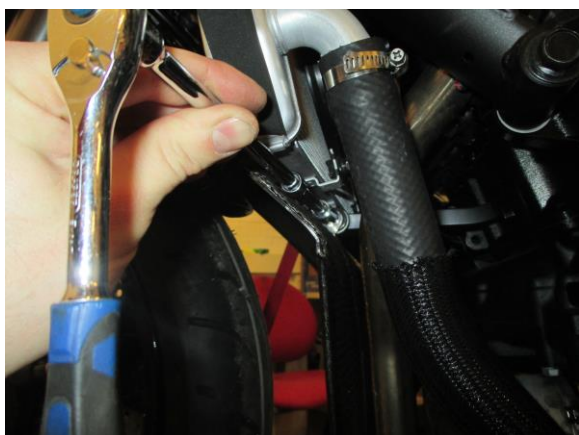
Picture 16



Picture 17



Picture 18



Picture 19



Picture 20

FITTING INSTRUCTIONS

If fitting to the '17- model

- To fit the Downpipe Grille the left side fairing must be removed. To do this, start by removing the upper side panel that is arrowed in picture 1. Remove the bolt that is shown in picture 2 and the push rivet that is arrowed in picture 3, before removing from the rubber mount shown in picture 4. The panel should now come away from the bike, as shown in pictures 5 & 6.
- Remove the side infill panel by removing the two bolts that are arrowed in picture 7. The infill panel can now be pulled off its rubber mount and removed from the bike, as shown in picture 8.
- Disconnect the connector for the indicator wiring, as shown in picture 9.
- Remove the two bolts arrowed in picture 10, along with the three bolts toward the front that are shown in pictures 11 & 12 on the main side fairing.
- On the lower belly pan section of the fairing, remove the two push rivets that connect both sides of the fairings together, as shown in pictures 13 & 14.
- On the inside of the side fairings, remove the two push rivets that connect the fairing to the inner radiator cowl plastic, as arrowed in pictures 15 & 16.
- The fairing can now be removed from the bike.

If fitting to the '11-'16 model

- To fit the Downpipe Grille the left side fairing must be removed.
- On both models, remove the bolt that secures the bottom of the radiator in position from the left side of the bike, as arrowed in picture 17.
- Offer the downpipe grille into position and secure the top mount using the original bolt and loosely tighten, as shown in picture 16. *If fitting with an R&G Radiator Guard in place, ensure the radiator guard lower mount sits between the downpipe grille mount and radiator mount.*
- Fit one cable tie through each slot in the top corners of the downpipe grille and loop through the radiator matrix before tightening, in order to keep the upper corners of the downpipe grill from moving and check to make sure the lower mount of the downpipe grille aligns with the push rivet hole on the bellypan at the bottom (do not fit the push rivet at this stage), as shown in picture 18.



- Once everything aligns, fully tighten the bolt on the radiator mount, using an extension on the socket, as shown in picture 19.
- Re-fit the fairing to the bike, ensuring to reconnect and indicator wiring.
- On the bellypan section of the fairing, locate both sides together and re-fit the original push rivet, ensuring that it also fits through the mounting hole on the bottom of the downpipe grille, as shown in picture 20. *You may need to position your hand through one of the fairing openings to apply pressure to the rear of the downpipe grille to correctly fit the push rivet.*
- Ensure the Downpipe Grille is installed correctly and fitted securely.
Ensure all panels and bolts are secure before riding.

ISSUE 1 21/03/2017 (AR)

Digital copies of these instructions are available to download from www.rg-racing.com

CONSUMER NOTICE

The catalogue description and any exhibition of samples are only broad indications of the Products and R&G may make design changes which do not diminish their performance or visual appeal and supplying them in such state shall conform to the order. The Buyer acknowledges no representation or warranty (other than as to title) has been given or will apply to the Products other than those in R&G's order or confirmation and the Buyer confirms it has chosen the Products as being of merchantable quality and suitable for its particular purposes. Where R&G fits the Products or undertakes other services it shall exercise reasonable skill and care and rectify any fault free of charge unless the workmanship has been disturbed. The Buyer is responsible for ensuring that the warranty on the motorcycle is not affected by the fitting of the Products. On return of any defective Products R&G shall at its option either supply a replacement or refund the purchase money but shall not be liable if the Products have been modified or used or maintained otherwise than in accordance with R&G's or manufacturer's instructions and good engineering practice or if the defect arises from accident or neglect. Other than identified above and subject to R&G not limiting its liability for causing death and personal injury, it shall not be liable for indirect or consequential loss and otherwise its liability shall be limited to the amounts paid by the Buyer for the Products or the fitting or service concerned. These terms do not affect the Buyer's statutory rights.

R&G RACING RETURNS POLICY (NON-FAULTY GOODS)

Returns must be pre-authorised (if not pre-authorised the return will be rejected). Goods may only be returned direct to us if they were purchased direct from us (customer must prove if necessary). Otherwise to be returned to original vendor. Goods must be in re-sellable condition, in the opinion of R&G Racing. All returns are subject to a 25% restocking and handling fee (25% of the gross value exc. P&P – at the prevailing price at time of purchase). The customer must pay any and all carriage charges. No returns of discontinued products, unless within 14 days of purchase. This policy does not affect your statutory rights and does not refer to faulty goods.



**NOTICE DE MONTAGE POUR DG0021 GRILLE DE PROTECTION TUYAUX
D'ÉCHAPPEMENT
KAWASAKI Z1000SX '11-**



Le kit contient les articles exposés ci-dessous, vérifier que toutes les pièces soient présentes avant de procéder au montage.

La façon dont le kit est emballé ne correspond pas forcément à la façon de monter les pièces sur la moto

Notez que si les kits sont emballés avec des rondelles en caoutchouc servant à tenir les composants, ces rondelles doivent être jetées.

LES PARTIES PRESENTEES PEUVENT ETRE UNIQUEMENT REPRESENTATIVES (POUR LA CLARTE
DES INSTRUCTIONS UNIQUEMENT)

COUPLES DE SERRAGE RECOMMANDES

M4 BOULON = 8Nm
M5 BOULON = 12Nm
M6 BOULON = 15Nm
M8 BOULON = 20Nm
M10 BOULON = 40Nm

OUTILS REQUIS

- Clé à cliquet + douille 10m.
- Clés Allen 4, & 5mm.
 - Tournevis plat.
 - Pince coupe câble.

Le kit doit contenir

1x Grille de protection tuyaux (DG0021).
4x Colliers de serrage.



Photo 1



Photo 2



Photo 3



Photo 4



Photo 5



Photo 6

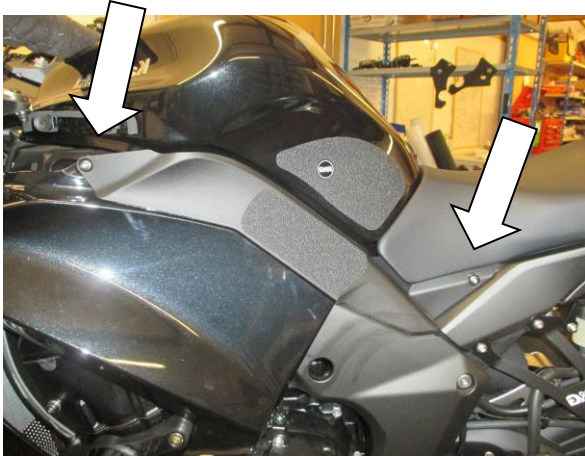


Photo 7

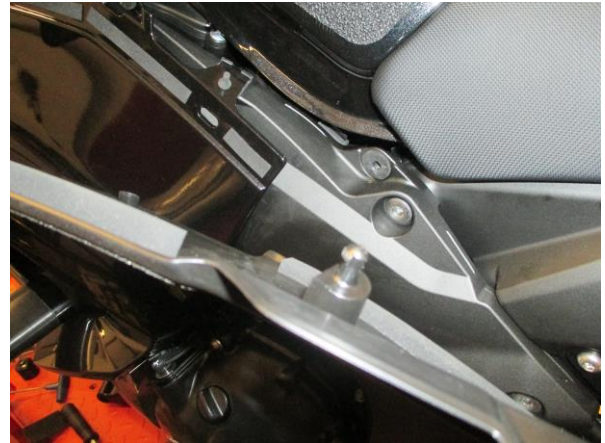


Photo 8



Photo 9

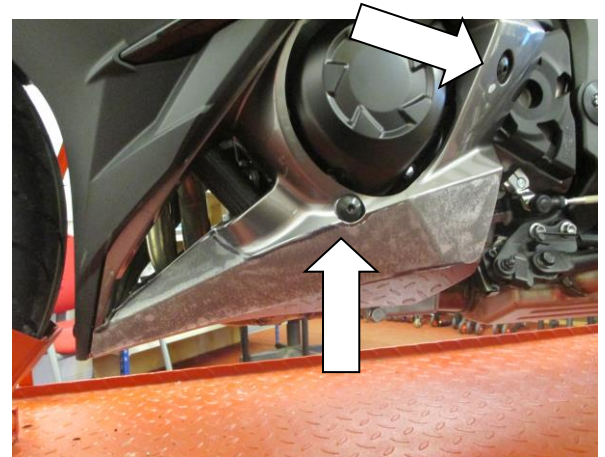


Photo 10



Photo 11

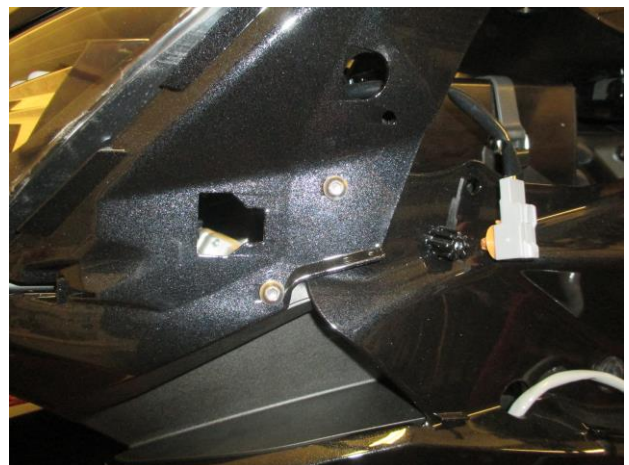


Photo 12

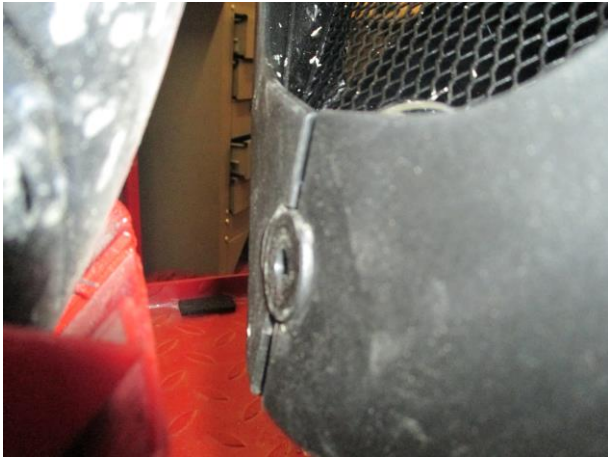


Photo 13



Photo 14

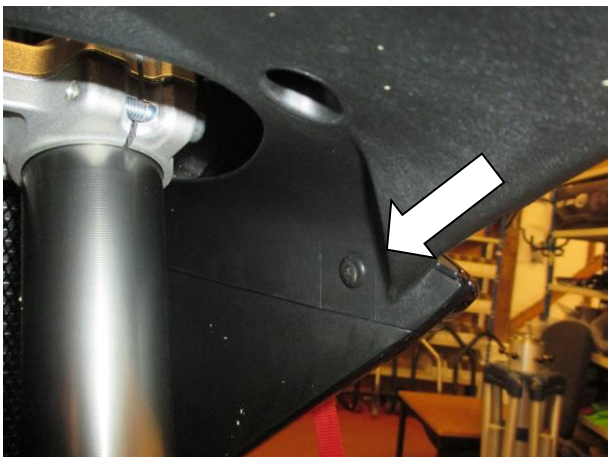


Photo 15

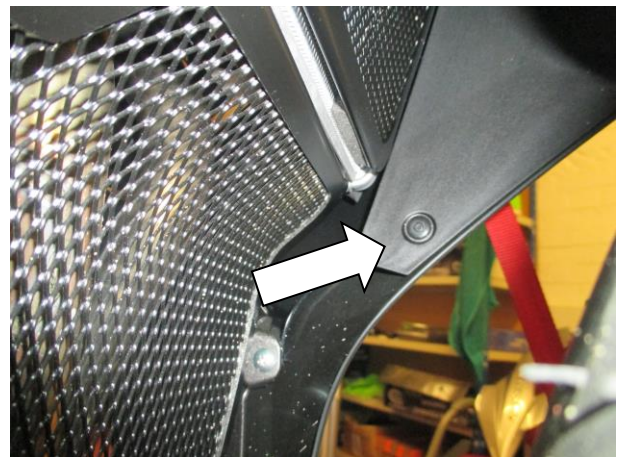


Photo 16



Photo 17



Photo 18



Photo 19



Photo 20

NOTICE DE MONTAGE

Installation sur modèle '17

- Pour monter la grille de protection, vous devez enlever le carénage du côté gauche. Pour cela, commencez par enlever le panneau supérieur indiqué sur la photo 1. Enlever le boulon indiqué sur la photo 2 puis le rivet indiqué sur la photo 3, avant de l'enlever de son support en caoutchouc indiqué sur la photo 4. Le panneau doit à présent s'enlever de la moto, voir photos 5 & 6.
- Enlever le panneau interne en enlevant les 2 boulons indiqués sur la photo 7. Le panneau interne peut maintenant être tiré de son support en caoutchouc puis enlevé de la moto, voir photo 8.
- Déconnecter le connecteur de fil de clignotant, voir photo 9.
- Enlever les 2 boulons indiqués sur la photo 10, avec les 3 boulons orientés vers l'avant indiqués sur les photos 11 & 12 sur le carénage principal.
- Sur le ventre du carénage, enlever les 2 rivets qui connectent les 2 parties de carénage ensemble, voir photos 13 & 14.
- A l'intérieur des carénages, enlever les 2 rivets qui connectent le carénage au cache radiateur interne, voir photos 15 & 16.
- Le carénage peut à présent être enlevé de la moto.

Installation sur modèles '11-'16

- Pour monter la grille de protection du côté gauche, le carénage doit être enlevé.
- Sur les 2 modèles, enlever le boulon qui fixe le bas du radiateur en position du côté gauche de la moto, voir photo 17.
- Monter la grille en position puis fixer le support supérieur à l'aide du boulon d'origine puis serrer légèrement, voir photo 16. *Si vous faites une installation avec une grille de protection R&G pour radiateur en place, veiller à ce que le support inférieur de la protection radiateur se place entre le support de grille de tuyaux d'échappement et le support radiateur.*
- Passer un collier de serrage dans chaque fente dans les coins supérieurs de la grille de tuyaux puis encerclez le dans la matrice de radiateur avant de serrer, afin de garder les coins supérieurs de la grille de tuyaux d'échappement fixes. Vérifier pour être sûr que le support inférieur de grille de tuyaux



d'échappement s'aligne avec le trou du rivet sur le ventre (Ne pas monter le rivet pour le moment), voir photo 18.

- Lorsque tout est aligné, serre complètement le boulon sur le support de radiateur, en utilisant l'extension sur la clé, voir photo 19.
- Remonter le carénage sur la moto, en veillant à le remettre correctement ainsi que les fils de clignotant.
- Sur le ventre du carénage, assembler les 2 cotés de carénage ensemble puis remonter le rivet d'origine, en veillant à ce qu'il se place droit dans le trou de fixation du bas de la grille de protection tuyaux, voir photo 20. *Vous pourriez avoir besoin de positionner votre main dans une des ouvertures du carénage pour appliquer une légère pression à l'arrière de la grille de tuyaux d'échappement pour monter le rivet correctement.*
- Veiller à ce que la grille de protection soit installée correctement et fixée.
Veiller à ce que tous les panneaux et boulons soient serrés avant de prendre la route.

ISSUE 1 21/03/2017 (AR)

Notice disponible au téléchargement sur www.rg-racing.com

CONSUMER NOTICE

The catalogue description and any exhibition of samples are only broad indications of the Products and R&G may make design changes which do not diminish their performance or visual appeal and supplying them in such state shall conform to the order. The Buyer acknowledges no representation or warranty (other than as to title) has been given or will apply to the Products other than those in R&G's order or confirmation and the Buyer confirms it has chosen the Products as being of merchantable quality and suitable for its particular purposes. Where R&G fits the Products or undertakes other services it shall exercise reasonable skill and care and rectify any fault free of charge unless the workmanship has been disturbed. The Buyer is responsible for ensuring that the warranty on the motorcycle is not affected by the fitting of the Products. On return of any defective Products R&G shall at its option either supply a replacement or refund the purchase money but shall not be liable if the Products have been modified or used or maintained otherwise than in accordance with R&G's or manufacturer's instructions and good engineering practice or if the defect arises from accident or neglect. Other than identified above and subject to R&G not limiting its liability for causing death and personal injury, it shall not be liable for indirect or consequential loss and otherwise its liability shall be limited to the amounts paid by the Buyer for the Products or the fitting or service concerned. These terms do not affect the Buyer's statutory rights.

R&G RACING RETURNS POLICY (NON-FAULTY GOODS)

Returns must be pre-authorized (if not pre-authorized the return will be rejected). Goods may only be returned direct to us if they were purchased direct from us (customer must prove if necessary). Otherwise to be returned to original vendor. Goods must be in re-sellable condition, in the opinion of R&G Racing. All returns are subject to a 25% restocking and handling fee (25% of the gross value exc. P&P – at the prevailing price at time of purchase). The customer must pay any and all carriage charges. No returns of discontinued products, unless within 14 days of purchase. This policy does not affect your statutory rights and does not refer to faulty goods.